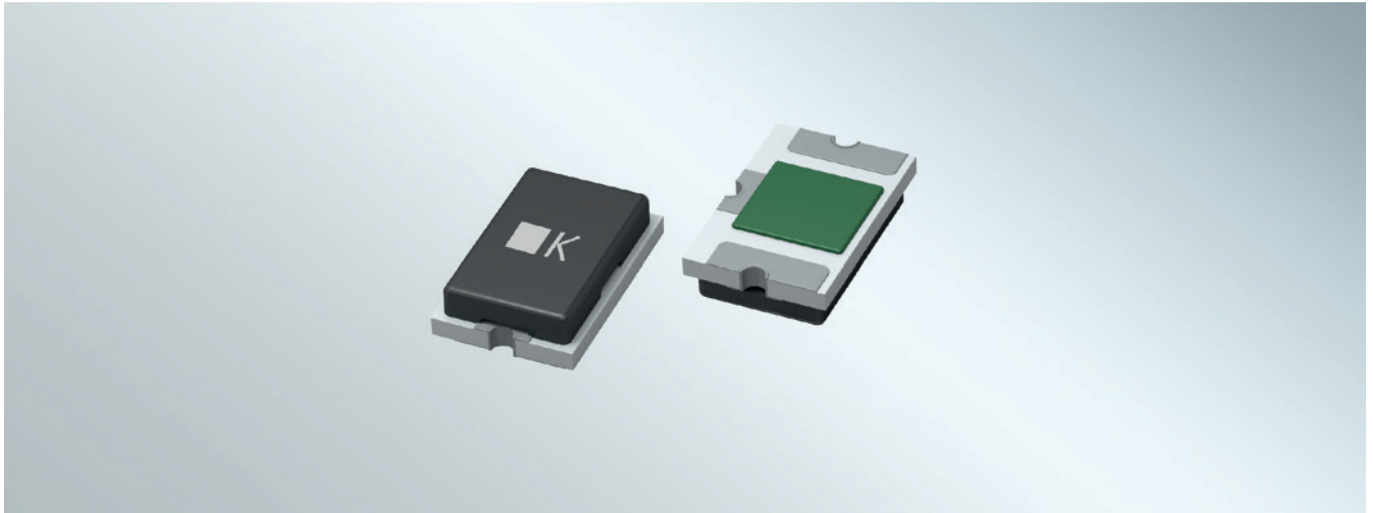




SEFUSE® Battery Fuse D6SK Series (12A)

Surface mount fuses for lithium ion batteries



SCHOTT SEFUSE® D6S battery fuses are used in the secondary protection circuit of li-ion batteries to prevent dangerous circumstances of overcurrent and overcharging, and additionally help prevent fires caused by overheating. **D6SK series battery fuses** are slim surface mount devices with a thickness of just 0.75mm and are suitable for circuit protection in devices that require space-saving components.

Applications

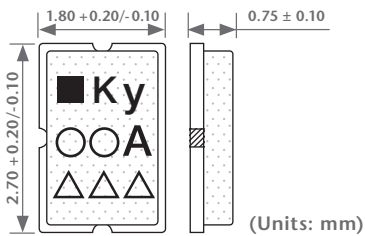
Battery packs for

- Smartphones
- Notebook PCs
- Tablets

Advantages

- Ultra-thin design
- RoHS compliant
- Antimony-free
- Halogen-free

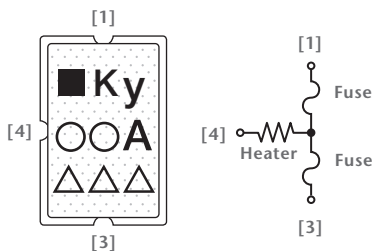
Dimensions and Marking



D6SK series battery fuses have markings on the cap that include the following items:

- K: Series name
- y: Heater resistance code
- ○○A: Rated current
- △△△: Lot number

Wiring Diagram





SEFUSE® Battery Fuse D6SK Series (12A)

Surface mount fuses for lithium ion batteries

Specifications/Safety Standards

Part Number	Rated Current (A)	Rated Voltage (Vdc)	Breaking Capacity (A)	Fuse Resistance (mΩ)	Applicable Series Cell Number	Applicable Voltage Range (V)	Heater Resistance (Ω)	UL	TÜV
D6SK1-12	12	36	50	3.0 ± 1.0	1	3.5 ~ 4.7	1.20 ± 20%	E357922	J50247451
D6SK2-12					2	6.0 ~ 9.2	3.60 ± 15%		

Forms of Supply

- Packing: Embossed carrier tapes
- Quantity: 4,000 pcs/reel



70341 ENGLISH 10/2020 ali/nino Printed in Germany

SCHOTT Japan Corporation
 3-1 Nichiden, Minakuchi-cho,
 Koka-shi, Shiga 528-0034
 Japan
 Phone: +81 (0) 748-63-6629
 Fax: +81 (0) 748-63-6627
 tf.sjc@schott.com

www.schott.com/batteryfuse

